

Target Zero: Review Questions

HIV Infection

1. What is HIV?
 - a. Double-stranded RNA virus
 - b. DNA virus: a virus that contains a DNA genome
 - c. Retrovirus: a virus that contains a single stranded RNA that is reverse-transcribed into DNA intermediate

2. Which cellular protein is targeted by the HIV envelope protein?
 - a. CD4 receptor on the surface of T-cell
 - b. Human enzyme APOBEC
 - c. CD8 receptor on the surface of T-cell

Drug Targets

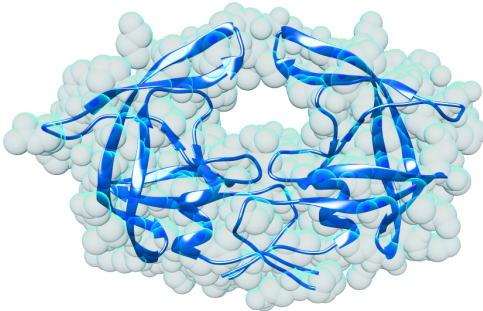
3. Which enzymes are targeted by HIV drugs?

4. What is the function of each of the targeted enzymes?

5. For each film module (Carmen, Elia, PrEP), describe the types of drugs prescribed and their targets.

6. What inhibitors target reverse transcriptase?
 - a. Nucleoside inhibitors
 - b. Non-nucleoside inhibitors
 - c. Both

7. Name the enzyme shown below. What is its function?



Treatment and Prevention

1. Why is it important to follow the drug regimen in HIV treatment (i.e. the dosage, the frequency, the combination of different drugs)? Name the possible consequences of not adhering to the regimen.

2. What is meant by viral load and why is it important to test it frequently?

3. What should an HIV-positive mother do in order to give birth to a healthy baby?

4. What is PrEP and who qualifies for it?

What precautions should patients use when taking PrEP and why?

Patient Care

5. How should an obstetrician counsel an HIV positive pregnant woman?

6. Several medical professionals were highlighted in the films.
 - a. Give specific examples how they provided compassionate, non-judgmental care

- b. Give specific examples of how they provide patient education

7. How does the prognosis for patients today differ from what it was 30 years ago?
